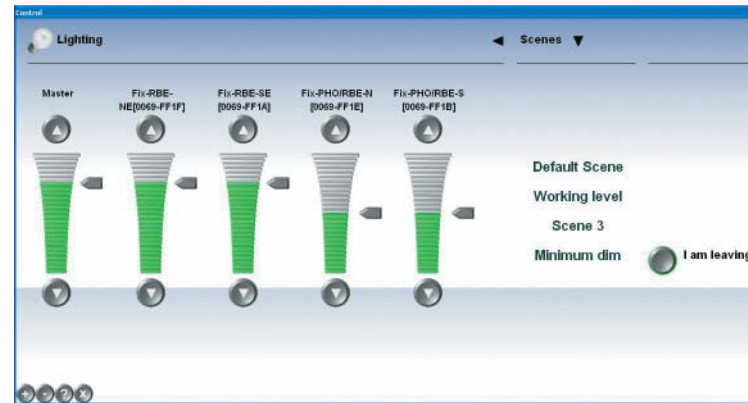


Personal Control Software (PCS) is an application which enables users to control lighting levels in their workspace from their own desktop PC. The user easily accesses PCS by clicking on a light bulb icon appearing in the system tray.



PERSONAL CONTROL SOFTWARE (PCS)

With this application, the user can control the light level of each luminaire in their workspace or of all the luminaires together as a group. Preset lighting scenes may be stored, recalled and modified from this application to suit the individual's personal preferences or task at hand. Users can only control luminaires assigned to their workspace at the time of system configuration. This configuration can be easily modified in case of in-house relocation or reconfiguration of the building through the Polaris™ Software.

PCS can also be used to control light levels or recall preset scenarios in larger spaces (such as boardrooms, conference rooms or auditoriums). In addition to the dimming functionality, PCS can be used to simply turn individual luminaires on or off.

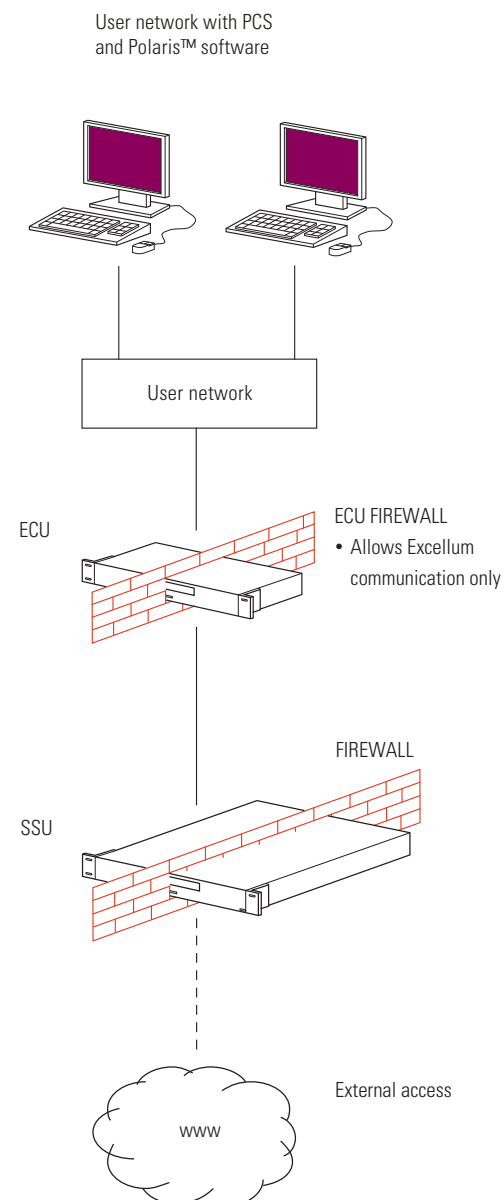
Communication with the Excellum equipment is established through a connection to the existing Local Area Network (LAN). PCS also has the unique capability of acting as a "virtual occupancy sensor" for the system. By detecting keyboard or mouse activity on each PC, PCS provides additional occupancy information to the system to ensure that lights remain in the desired state while a workspace is occupied.

PERSONAL CONTROL SOFTWARE VIA THE WEB (PCW)

For customers that require personal light control from their PC without installation of the personal control software on each individual PC, ELM provides a web interface (PCW) that has the same control functionality as PCS.

Everyone who has access the interface via their web browser, therefore use the same functions and practical applications as with PCS. Only the "virtual occupancy sensor" is not available with PCW. The PCW user interface is identical to that of PCS and utilizes HTML & Flash, making it compatible with virtually any web browser, computer operating system or network configuration.

The dimming and switching functionality and the capability of storing and modifying light scenes are identical to PCS.



Technical specifications PCS

System requirements:

Operating system	Microsoft Windows XP, VISTA or Windows 7
Min. hard drive space	20 MB
Min. RAM	64 MB
Network connection with access to ECU via network	

TCP/IP network traffic < 2 kb/s

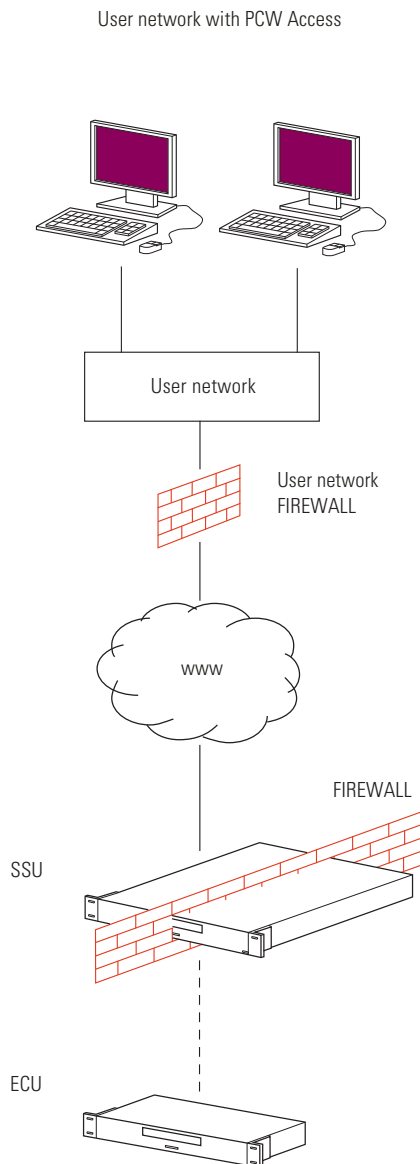
Firewall incorporated in ECU

Technical specifications PCW

System requirements:

Internet browser with Flash plug-in
Internet/intranet connection
SSU authorized and configured to enable dynamic website
Network connection with access to ECU or SSU via network

Order code: is included in the software licence of ECU (C2C00).



ETAP Lighting, U.K. Branch

Unit 6 - Windsor Business Centre

Vansittart Estate - Windsor

Berkshire SL4 1SE

Tel. + 44 (0) 1753 829970

Fax + 44 (0) 1753 859208

e-mail: enquiries@etaplighting.com

www.etaplighting.com