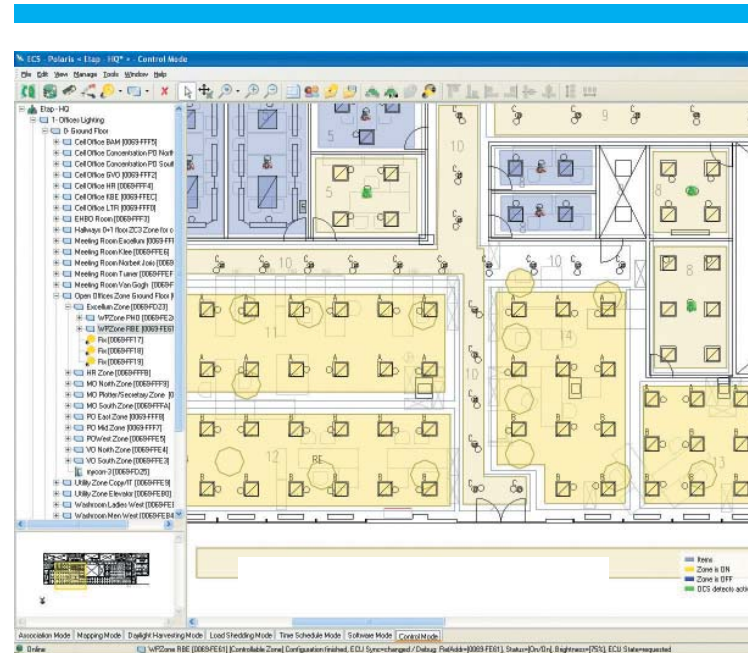


Polaris™ is a software application used to commission and configure the ETAP Excellum system. It enables configuration of every system parameter of the lighting in a building (or campus of buildings) and establishes the baseline settings for the following system features:

- Intelligent time control
- Daylight linking system
- Task or Zone Tuning
- Occupancy Control
- Individual Control via push-buttons or PCS
- Peak load

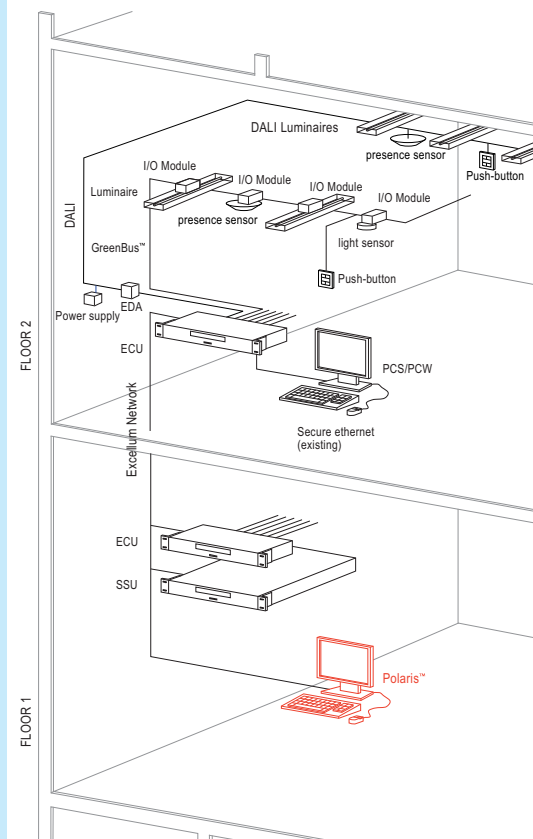


Polaris™ utilizes a floor plan based graphical interface that permits a user to easily navigate between zones, floors or different buildings and to zoom in on specific areas of a building. Navigation throughout a building can also be done via a zone tree with each zone being labelled according to its use or location. Advanced system features such as creation of zone hierarchies, overlapping and support zone definitions, user access rights, timeout settings for presence detection, calibration of light levels for daylight dependant control and the setting of multiple time schedule profiles are controlled through Polaris™.

Polaris™ also enables convenient "drag and drop" addressing of all hardware devices connected to the system such as luminaires, sensors, relays or lighting controllers. The system links the physical location of a luminaire to a defined zone and associated lighting functionality. No pre-assigned addresses are therefore required upon installation, making for simple specification and swift installation. Similarly, regrouping of luminaires or assignment of a sensor to a group of luminaires or zone is accomplished via software rather than by physical rewiring. In the event of a building reconfiguration or renovation, updated floor plans are easily imported from AutoCAD.

As building lighting requirements and operating characteristics change over time, Polaris™ is used to reconfigure system settings to ensure optimum lighting and energy management. Interfaces to other building automation systems utilizing standard protocols such as BACnet®, OPC or Tridium are also set up within Polaris™.

Component of this data sheet is indicated in red.



#### **System requirements (Polaris™)**

Operating system	Microsoft Windows XP/VISTA
Min. hard drive space	500 MB
Min. RAM	128 MB
Network connection with access to an ECU connected on that network	

#### **Order code**

Polaris™ software is included in the software licence of ECU (C2C00).

#### **ETAP Lighting, U.K. Branch**

Unit 6 - Windsor Business Centre

Vansittart Estate – Windsor

Berkshire SL4 1SE

Tel. + 44 (0) 1753 829970

Fax + 44 (0) 1753 859208

e-mail: [enquiries@etaplighting.com](mailto:enquiries@etaplighting.com)

[www.etaplighting.com](http://www.etaplighting.com)