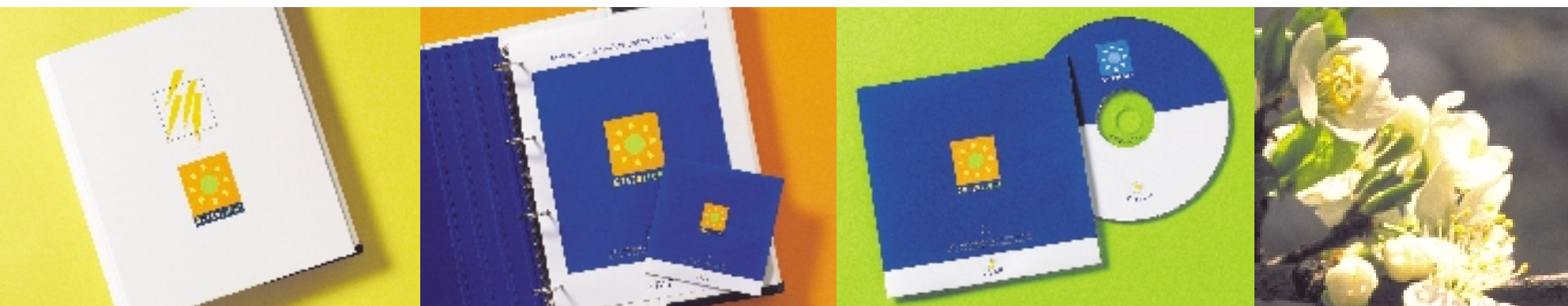


Step by step GreenLight Partner with assistance from ETAP

ETAP helps you become a GreenLight Partner

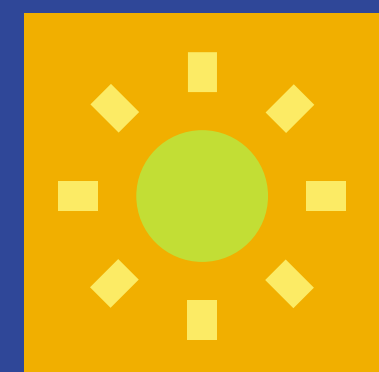


Specially for our business contacts we have prepared a practical manual giving all of the information about the GreenLight Programme. The action plan gives a straight-forward indication of what action needs to be taken. It gives procedures for drawing up an inventory of your existing lighting and preparing the 5-year plan. The manual includes all of the GreenLight forms, also contained on the CD-ROM, to help with processing them in practice.

8004328-004E/O Information is provided for guidances only and we reserve the right to change details.



ETAP Lighting • Telford Road • Houndmills • Basingstoke • Hampshire RG21 6YW • Tel. +44 (0)1256-818818 – Fax +44 (0)1256-363358
e-mail: enquiries@etaplighting.co.uk • www.etaplighting.com
An ETAP & Urbis Joint Venture



GREENLIGHT



THE EUROPEAN GREENLIGHT PROGRAMME
An initiative promoted by the European Commission



Main Endorser

What is GreenLight?

The GreenLight Programme is an initiative of the European Commission. The aim is emitting less greenhouse gasses by systematic energy saving in lighting by companies and authorities. Participants in the GreenLight Programme, the GreenLight Partners, can show that they are making efforts for the environment. Participating means "promising to apply energy efficient lighting systematically". The promise is subject to the condition that the investment is cost-effective and that it improves the lighting. Participating in the programme does not require any legal commitment or financial contribution.



50% of electricity usage in office buildings comes from lighting.

Why should you become a GreenLight Partner?

- You save on your energy costs.
- Your maintenance costs decrease.
- Your buildings acquire greater lettability.
- Working conditions improve which can result in:
 - lower absence through illness
 - higher productivity
 - less errors
- The image of your building improves.
- You do something about your responsibility for the environment.
- You do your bit towards reducing greenhouse gasses.

What does the European Commission do for you as GreenLight Partner?

- You are recognised as an official GreenLight Partner.
- You are given the right to put up a "GreenLight Partner" sign on the building.
- The European Commission promotes GreenLight Partners in advertisements, catalogues, website, etc.
- You can make exclusive use of the GreenLight logo.
- You can take part in competitions for winning the GreenLight Award.



Ambience and comfort thanks to optimum lighting solution.



Energy saving lighting possibilities.



Saving energy using the ETAP daylight dependent lighting control system ELS.

How do you become a GreenLight Partner?

- Let ETAP guide you: as Main Endorser of the GreenLight Programme we know the way like no other.
- Promise that over the next five years you will be upgrading half of the lighting installations in your existing buildings, provided that this is cost-effective and it improves the lighting.
- Or promise that you will reduce the total energy consumption for lighting by at least 30%.
- Make a manager within your organisation responsible for the GreenLight Programme.
- Prepare a GreenLight long-range plan and report on progress annually to the European Commission.



A light calculation with an impression of the space to be lit.



The ELS sensor.

How does ETAP guide you?

As Main Endorser of the GreenLight Programme we are able to give you effective guidance as a GreenLight Partner or prospective GreenLight Partner. ETAP has had over fifty years experience in professional lighting projects. Our specialists can produce the ideal lighting solution for any situation. We prepare light calculations with impressions of the space to be lit. Using AutoCAD we plan where luminaires can be best sited. We calculate for you the operating expenses and cost-effectiveness of the chosen solution. If required we can build a prototype or carry out energy measurements. ETAP high efficiency luminaires, in which high reflection aluminium is used, provide optimum lighting comfort. The lighting control system based on daylight ELS (ETAP lighting control system), or the lighting control systems based on movement, MDD (Movement Dependent Dimmer)and MDS (Movement Dependent Switch) and the local lighting control system CONTROL-it™ guarantee minimum energy usage with maximum comfort. Visit our Light Pavilion and experience for yourself the advantages of ETAP Lighting in the different display areas.



Experience for yourself the advantages of ETAP Lighting in our Light Pavilion.