

R4

Pure and simple







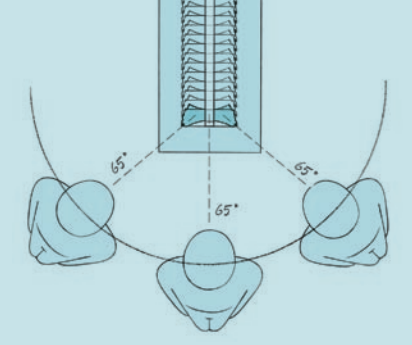
Seamless construction

Nothing without purpose

R4 features pure design perfectly executed in a seamless construction. Both the suspended and ceiling versions can easily be integrated into the building's architecture. What's more, R4 optics have outstanding photometric qualities, giving

you the choice between single and double lamp length luminaires with diffusers or continuous reflectors. Lines with continuous optics are also available and you can connect these lines at an angle of 90°.





The EQUILUM® reflector ensures uniform shielding in all normal directions of view.

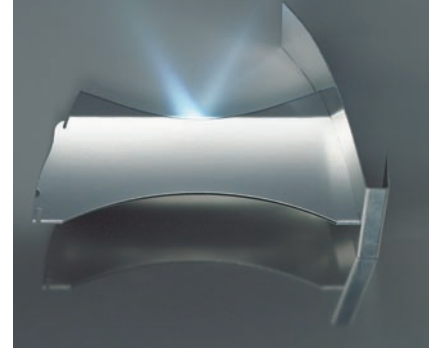
EQUILUM® reflector: energy efficiency and visual comfort

EQUILUM® reflectors provide a high level of visual comfort. With EQUILUM®, R4 more than meets the luminance requirements of EN12464-1, the European lighting standard for workstations. EQUILUM® reflectors prevent disturbing peak luminances and provide even shielding in all directions. This offers you freedom when organising

your space, without the risk of disturbing glare. EQUILUM® also keeps your energy consumption to a minimum. The high level of efficiency combined with the optimal light distribution ensure that lighting levels can be achieved with fewer luminaires, guaranteeing reduced energy costs and installation costs.

R4 with EQUILUM® reflectors offers you a wide range of luminaires for general lighting. Furthermore, there are specially adapted solutions for specific applications.





EQUILUM® offers a high level of visual comfort



Suspended luminaires with connectable direct and indirect light for lighting small offices.



Wallwashers for illuminating vertical surfaces.



Enclosed luminaires with a transparent protected reflector.



R4 luminaires in-line with a HaloOptics® diffuser

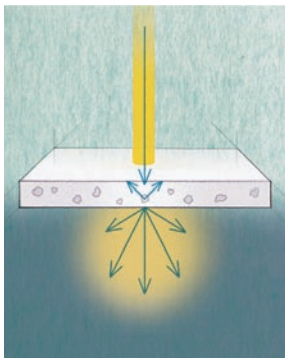


Higher efficiency thanks to MesoOptics™

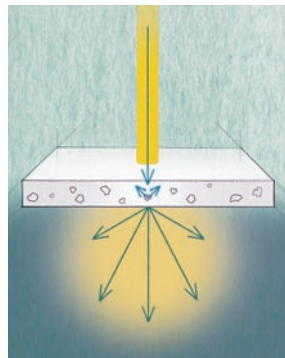
High-end diffusers

Some applications, require a higher level of brightness in the room. For those purposes, R4 is available with diffusers. R4 diffusers spread the light evenly throughout, resulting in brighter, fresher rooms. The optic itself is evenly lit without flashing, disturbing luminances or colour interference. As such, R4 will create tranquillity and pleasantly illuminate your room.

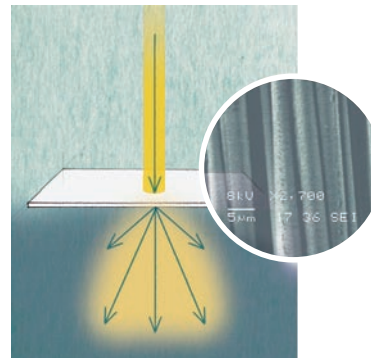
Diffusers with MesoOptics™ or HaloOptics® technology have a much higher level of efficiency than traditional diffusers. You'll need fewer luminaires, and both your energy bill and the environment will benefit.



Traditional diffuser



HaloOptics® diffuser for a higher level of efficiency



MesoOptics™ diffuser for a higher level of efficiency and sophisticated light distribution

Customisation

The dimensions of R4 luminaires can be adapted to meet the needs of your project. Luminaires can be extended or raised, giving you the possibility to incorporate additional R4 techniques, such as integrated sockets, extra throughwiring, speakers, etc. The length of R4 lines can be adapted to your wishes by means of extended intermediate and end luminaires.

Easy installation and maintenance



R4 is designed for fast and easy installation and maintenance. For ceiling as well as suspended versions — even in double length — two suspension points are all you need. The quick adjustment system allows for suspension heights to be easily adjusted.



ELS sensor for daylight control



EMD multisensor for integrated light control



K9 module for emergency lighting

Integrated Lighting controls

Lighting control systems allow you to make considerable savings on your energy bill. You can easily integrate them in R4.

The ELS system dims the artificial light depending on the amount of daylight. The ETAP multisensor for DALI (EMD) combines daylight and movement dependent daylight control with movement detection and IR control.

Luminaires with emergency units are available as standard in the R4 series.

On request, integration of the K9 module is possible. This recessed LED module provides optimal lighting in emergency situations. The reliability is high because the fluorescent lamp is not being used for emergency lighting.



By making the ceiling luminaires higher, you have a greater level of freedom in terms of power supply.



The hinged optics for easy lamp replacement and maintenance.

The R4 series consists of surface-mounted and suspended luminaires, available in either white (RAL9003) or aluminium white (RAL9006), in single- or twin-lamp versions. For optics you choose reflectors or diffusers.

▼ Individual

> LINEAR



single lamp length - reflector (with or without a transparent protected reflector) and diffuser

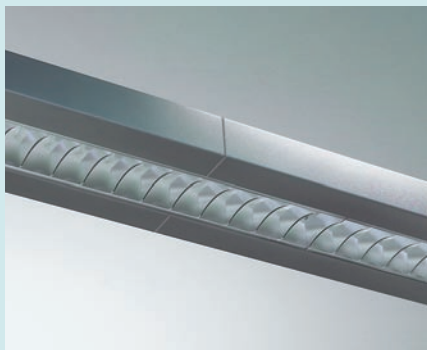


double lamp length - reflector

> SQUARE



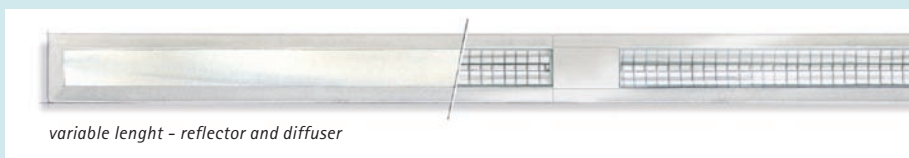
✓ In line



in-line assembly



angular assembly

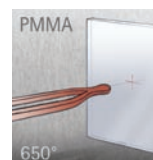


variable length - reflector and diffuser

✓ Asymmetric reflector



✓ Connectable direct and indirect light



The diffuser is available in two versions. The PMMA version satisfies the filament test at 650°C, in compliance with current fire-safety requirements. For stricter requirements the R4 diffuser is also available in a version, which satisfies the filament test at 850°C or 960°C.

Within R4 you can opt for luminaires with dynamic lighting. The luminaires contain lamps with different colour temperatures, making it possible to vary both luminous intensity and light colour.



R4



- Pure design
- Seamless
- High-end reflectors and diffusers
- Minimal energy consumption
- Easy installation

ETAP Lighting, U.K. Branch ■ Unit 6 ■ Windsor Business Centre ■ Vansittart Estate ■ Windsor ■ Berkshire SL4 1SE
Tel. + 44 (0) 1753 829970 ■ Fax + 44 (0) 1753 859208 ■ enquiries@etaplighting.com

www.etaplighting.com

