

# E7



ETAP 

EXCELLENT LIGHTING, SAVING ENERGY



## E7 – LED lighting for large spaces

E7 is a series of individual and in-line luminaires with LEDs to illuminate large spaces. The series uses ETAP's LED+LENS™ technology and provides modular solutions for the lighting of industrial halls, warehouses, stores, sport centres and public buildings.

### Advanced LED technology

With E7, the LED+LENS™ technology was fully geared to large spaces, which require a considerable amount of light. The combination of high-power LEDs and advanced lenses provides sophisticated light distribution and optimal efficiency.

**A sea of light from a compact luminaire**  
Thanks to high-power LEDs, E7 luminaires produce light output up to 10,000 lumen per metre. The lenses' patented surface structure softens the LED light with minimum loss. The result is a high luminous efficacy (up to 107 lm/W) and maximum visual comfort – critical in workplaces, retail environments or busy public buildings (UGR < 19 or 22, depending on the type of lens).

E7 luminaires are compact: driver, wiring and optics form one integrated and minimalist unit. They are made from anodised aluminium, which contributes to optimal heat dissipation.

### Flexible

The E7 series is highly flexible. The luminaires are available in several lengths: 1, 2 or 4 metres. They can be installed individually or inline and are available in surface-mounted or suspended version.

But there's more. One of the major advantages

of LEDs is that the length of the luminaire no longer depends on the length of the lamp, as in fluorescent lighting. The amount of light can be perfectly geared to your lighting needs. You can choose from a single or double row of LEDs, the number of LEDs per metre is also flexible.

### Energy-efficient

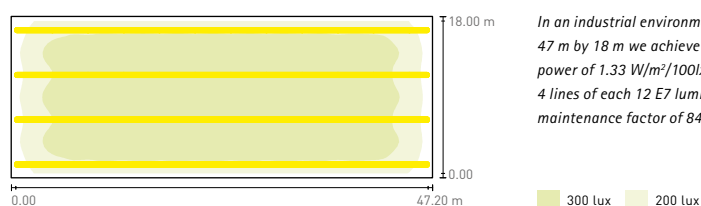
High quality LEDs and excellent thermal management result in high lumen retention. After 50,000 burning hours, LEDs retain a

luminous flux of no less than 99%, which also contributes to reducing the number of luminaires and cutting installed power (see sample configurations).

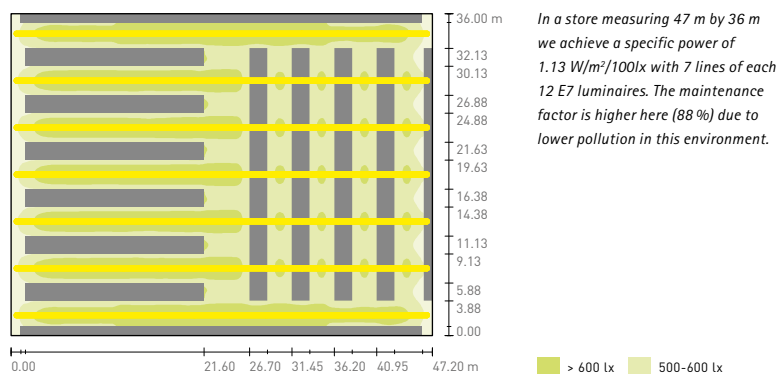
E7 is fitted with lenses which ensure that the light hits the correct target and no energy is wasted on the undesirable scattering of light.

### SAMPLE CONFIGURATIONS

#### INDUSTRY



#### STORES

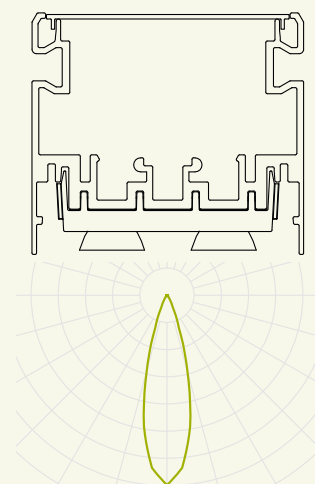




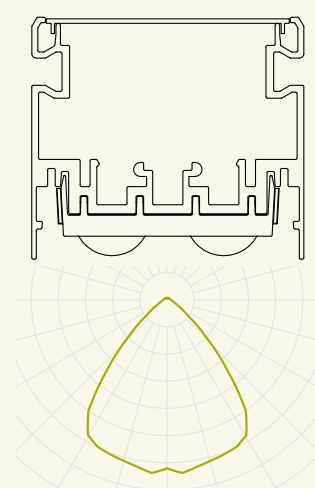
Depending on your application, E7 creates a wide-angle, medium-angle and narrow angle or asymmetric light distribution.



NARROW-ANGLE



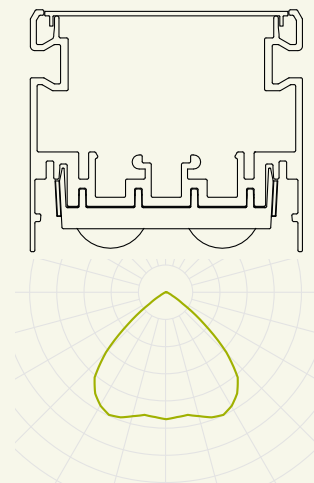
MEDIUM WIDE-ANGLE



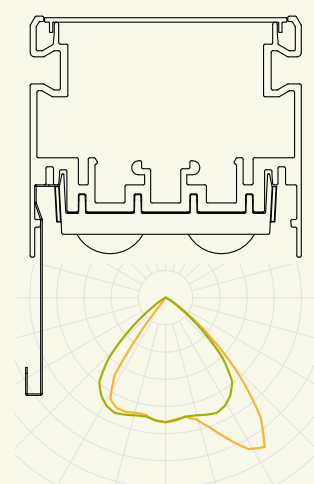
E7 was subjected to an impact test and is therefore suitable for sports halls.



WIDE-ANGLE



ASYMMETRIC



*For asymmetric light distribution, we combine medium wide-angle lenses with a reflector.*





For an E7 line with  $n$  segments,  $n+1$  suspension points are all you need.

Installation and maintenance

After installing the bracket, E7 can be mounted in one step: hook the luminaires into the bracket and snap into place. Only two suspension points are needed per luminaire, even for the longest 4-metre version. For line systems one suspension point per luminaire is sufficient, plus another one at the beginning of each line.

The long service life of the LEDs makes lamp replacement redundant so that you won't have to worry about maintenance. An important advantage in the context of large spaces, where lamp replacement is not always easy. The E7 luminaires are equipped on top with a polycarbonate cover plate, which provides electrical safety and protects against dust. A cover plate is also available as an option for the bottom, which protects against dust and dirt (IP 40) and which is easy to clean.



Optional cover plate for easy maintenance and protection against dirt and dust.



The handy hook and click system allows for easy and particularly fast installation.

Product series



surface-mounted



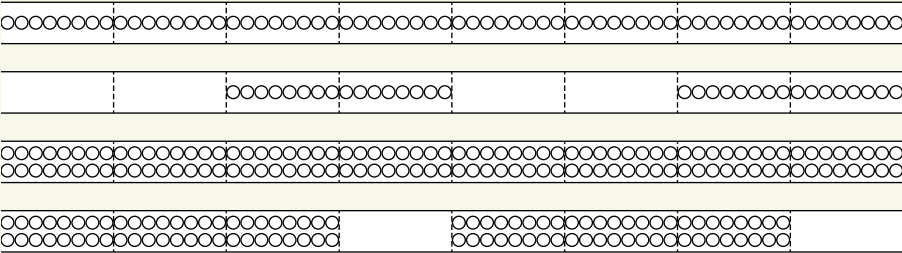
suspended



individual



in line



Thanks to the modular construction, you can choose between one or two rows of LEDs, continuous or at intervals. The intervals may vary from 1 to 5 25-cm segments.

The E7 can be fitted with sensors for light control and emergency lighting.



## E7

### High flexibility

- Individual or in-line
- Modules with luminous flux up to 10,000 lm per metre

### Energy-efficient

- LED+LENS™ technology
- 4 light distributions: wide-angle, medium wide-angle, narrow-angle, asymmetric
- High lumen maintenance and long service life
- Integration of light control systems possible

### Easy installation and maintenance

- Handy hook and click system
- Only few suspension points needed
- No lamp replacement necessary
- Optional cover plate for easy cleaning (IP40)



ETAP NV ▪ 7 Progress Business Centre ▪ Whittle Park Way ▪ Slough ▪ Berkshire SL1 6DQ  
Tel. +44 (0)1628 559 650 ▪ Fax +44 (0)1628 559 012 ▪ [enquiries@etaplighting.com](mailto:enquiries@etaplighting.com)

ETAP Export Department ▪ Antwerpsesteenweg 130 ▪ 2390 Malle ▪ Belgium  
Tel. +32 (0)3 310 02 11 ▪ Fax +32 (0)3 311 61 42 ▪ [export@etaplighting.com](mailto:export@etaplighting.com)

ETAP U.A.E. ▪ Energy & Environment Park ▪ Nucleotide Lab Complex, 2nd floor, Office EO 01, PO BOX 345014, Al Barsha ▪ Dubai, UAE  
Tel. +971 (0)4 434 7364 ▪ Fax +971 (0)4 437 0378 ▪ [export@etaplighting.com](mailto:export@etaplighting.com)

[www.etaplighting.com](http://www.etaplighting.com)