



D4 LED downlight with ELS - webref. SD4001L1

## ELS

### DAYLIGHT DEPENDENT LIGHT CONTROL

- Regulates and shuts down the artificial light output in accordance with the level of natural light
- Energy-saving
- Controls the light level individually
- Imperceptible automatic dimming
- Easy installation, clicked onto the lamp or integrated into the housing

#### ELS 1-10 V

The ELS sensor is integrated into the luminaire and controls a standard dimming electronic ballast with analogue control of 1-10V ballast or LED driver.

As an option, ELS can be combined with external dimming of 1-10V.

#### DALI-ELS

Luminaires with DALI ballast can also be equipped with an ELS light sensor. Optionally it can switch of the artificial light, after it has been at the dimmed level for a while.

#### INSTALLATION

The installation time for luminaires with or without ELS is the same, because no additional connections have to be made.

#### MEASURING FIELD

Minimum measuring field on the floor:  $\varnothing 1,7$  m for a mounting height of 2,8 m

#### SETTINGS

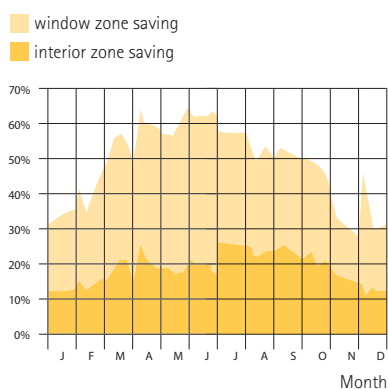
ELS: the light sensor's sensitivity is adjustable (approx. 15% per revolution). For every project, ELS is equipped with the appropriate settings in the factory.

Standard settings: 500 lx for 20% reflection factor of the measuring field. Other settings for 1-10V ELS on request.

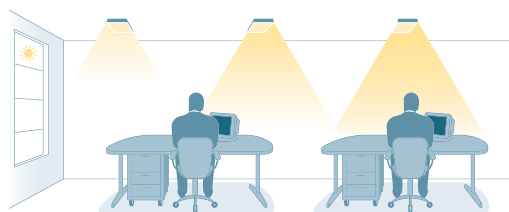
#### ORDER

Consult your ETAP advisor for other factory settings.

The sensor can be built into the housing on request.



Percentage energy saving of a luminaire with ELS with respect to a luminaire with a non-dimmable electronic ballast.



How much energy you save depends, among other things, on daylight entry and the orientation of the building.